

# Mission 1000 · 2000 · 3000

Single-phase uninterruptible power supplies



Uninterruptible Power Supplies

MODEL		MISSION 1000	MISSION 2000	MISSION 3000
NOMINAL POWER		1000VA / 900W	2000VA / 1800W	3000VA / 2700W
INGRESSO	Input	Single-phase + GND		
	Voltage Range	115±5VAC-295±5VAC		
	Frequency Range	45Hz-55Hz@50HZ/55Hz-65Hz@60HZ		
	Power Factor	≥0.98		
	ECO interval	Output voltage ±20VAC		
	Bypass range	186VAC-252VAC		
	THDi	≤7%(100% non linear load)		
	Connection	1x IEC		1x Terminal block L/N + T
USCITA	Output	Single-phase + GND		
	Nominal Voltage	208/220/230/240VAC		
	Power Factor	0.9		
	Voltage tolerance	±2%		
	Frequency	Normal operation	1. When input frequency is within its range, then output frequency is the same than input. When input frequency is out of its range, then output frequency is (50/60±0.2)Hz, which is the same as in battery mode.	
		Battery operation	(50/60±0.2)Hz	
	Crest Factor		3:1	
	Switching time		Rete <--> batteria = 0ms	
	Overload	Battery operation	108%±5%<load 150%±5% >30s output shutdown and signal, 150%±5%<load<200%±5% >300ms output shutdown and signal	
		Normal operation	108%±5%<load 150%±5% >30s switch to bypass and signal 150%±5%<load<200%±5% >300ms switch to bypass and signal	
	Efficienza	Normal operation	100% of load ≥88%	
		Battery operation	100% of load ≥85%	
		ECO	100% of load ≥94%	
	Output voltage distortion		≤3%(100% linear load)	
			≤5%(100% non linear load)	
	Outlet type		2x IEC 1x Schuko	3x IEC 2x Schuko 3x IEC 1x terminal L/N + T
BATTERIA	Input battery voltage	24VDC	48VDC	72VDC
	Number of internal batteries	2	4	6
	Type of battery	12V/7AH battery maintenance-free, sealed lead acid (referred to UPS standard only)		
	Autonomy time	Full load 4min (referred to UPS standard only), for long autonomy times models, the autonomy is defined by the battery capacity.		
	Recharge current (A)	1		

- The product is manufactured to withstand EMC standard and it is CE marked:

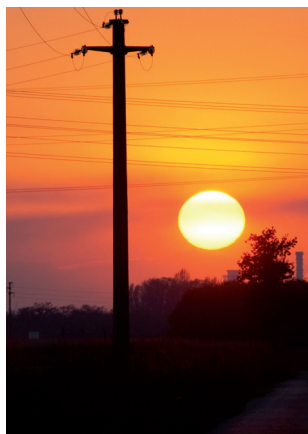
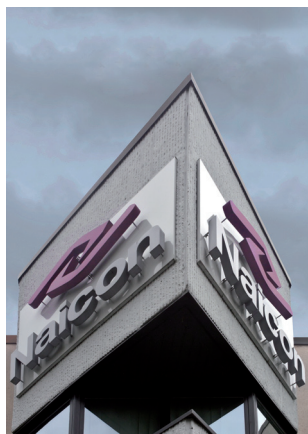
EMC STANDARD	SAFETY STANDARD
IEC62040-2	IEC62040—1
IEC61000-4-2	GB4943-5
IEC61000-4-3	IEC62040-3
IEC61000-4-4	
IEC61000-4-5	

- Environmental conditions

MODEL	MISSION 1000 – 2000 - 3000
Temperature	0°C ~40°C (battery excluded)
Humidity	0~95% without condensation
Max Operating altitude	<1500m if >1500m, output power reduced
Storage temperature	-25°C ~55°C (battery excluded)

- Specifiche meccaniche

MODEL	DIMENSIONS WxDxH (mm)	GROSS WEIGHT / NET (Kg)
MISSION 1000	144x368x215	10,5 / 9,7
MISSION 2000	191x469x339	21,6 / 20
MISSION 3000		26,2 / 24,6



Naicon srl Via il Caravaggio, 25 Trecella  
I-20060 Pozzuolo Martesana - Milano (Italy)  
Tel. +39 02 95.003.1 Fax +39 02 95.003.313  
[www.naicon.com](http://www.naicon.com) e-mail: [naicon@naicon.com](mailto:naicon@naicon.com)