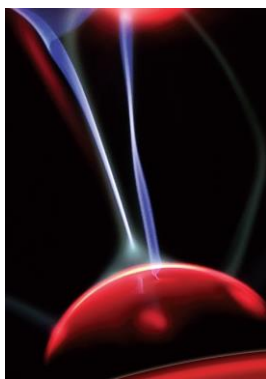


Mission 1000 · 2000 · 3000

Single Phase UPS



Uninterruptible Power Systems

MODEL			MISSION 1000	MISSION 2000	MISSION 3000
RATED CAPACITY			1000VA / 900W	2000VA / 1800W	3000VA / 2700W
INPUT	Input		Single phase and earthing		
	Voltage range		115±5VAC-295±5VAC		
	Frequency range		45Hz-55Hz @50HZ/55Hz-65Hz @60HZ		
	Power factor		≥0.98		
	ECO range		Setting output voltage±20VAC		
	Bypass range		186VAC-252VAC		
	THDi		≤7%(100% non linear load)		
	Connection		1x IEC		1x Terminal L/N + T
OUTPUT	Output style		Single phase and earthing		
	Rated voltage		208/220/230/240VAC		
	Power factor		0.9		
	Voltage precision		±2%		
	Output Frequency	Line mode	1. When input frequency is in the range, the output frequency is the same as that of input. When input frequency is out of the range, the output frequency is (50/60±0.2)Hz when turn to battery mode		
		Battery mode	(50/60±0.2)Hz		
	Crest ratio		3:1		
	Transfer time		Mains ↔ Battery = 0ms		
	Overload capacity	Battery mode	108%±5%<load≤150%±5% > 30s cut off output and warn, 150%±5%<load<200%±5% > 300ms cut off output and warn		
		Line mode	108%±5%<load≤150%±5% > 30s transfer to bypass and warn 150%±5%<load<200%±5% >300ms transfer to bypass and warn		
	Efficiency	Line mode	Full load ≥88%		
		Battery mode	Full load ≥85%		
		ECO	Full load ≥94%		
	Output voltage distortion		≤3% (100% linear load)		
			≤5% (100% non linear load)		
	Connection		2x IEC 1x Schuko	6x IEC 1x Schuko - 1x Terminal L/N + T	
BATTERY	Input battery voltage		24VDC	48VDC	72VDC
	Internal battery capacity		2	4	6
	Internal battery type		12V/7AH sealed lead acid maintenance free battery (only refers to standard UPS)		
	Backup time		10min (only refers to standard UPS), as for long backup UPS, the backup time is determined by the capacity of battery.		
	Charge current (A)		1		

- Our product are manufactured according to the following EMC international grade standard and has passed the CE authentication:

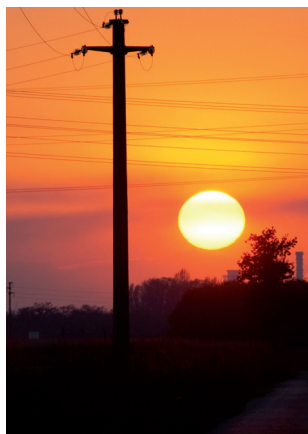
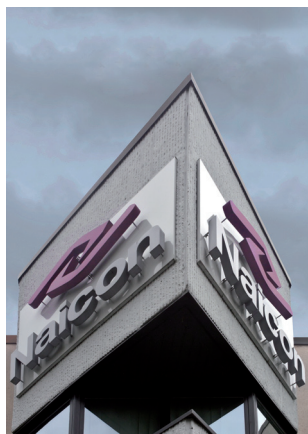
STANDARDS
IEC/EN 62040-1
IEC/EN 62040-2
IEC/EN 62040-3
IEC/EN 60950-1

- Work Environment

MODEL	MISSION 1000 – 2000 - 3000
Temperature	0°C~40°C
Relative humidity	0~95% non condensing
Altitude	<1500m se>1500m, lower the rated power for use
Store temperature	-25°C~55°C
Noise	< 50dB @ 1mt

- Mechanical Specification

MODEL	DIMENSION WxDxH (mm)	GROSS / NET WEIGHT (Kg)
MISSION 1000	144x400x215	10,3 / 9,3
MISSION 2000	191x470x336	20,8 / 18,8
MISSION 3000		25,8 / 23,8



Naicon srl Via il Caravaggio, 25 Trecella
I-20060 Pozzuolo Martesana - Milano (Italy)
Tel. +39 02 95.003.1 Fax +39 02 95.003.313
www.naicon.com e-mail: naicon@naicon.com