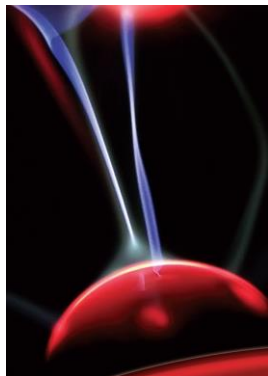


Polaris

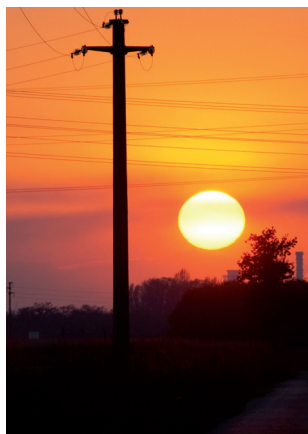
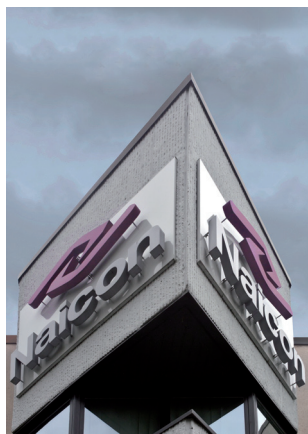
3Phase 10-40Kva



Electrical System for Continuity

MODEL		POLARIS 10	POLARIS 15	POLARIS 20	POLARIS 30	POLARIS 40
Input	Capacity	10KVA 10KW	15KVA 15KW	20KVA 20KW	30KVA 30KW	40KVA 40KW
	Phase	3 Phase 4 Wires and Ground				
	Rated Voltage	380/400/415Vac				
	Voltage Range	208~478Vac				
	Frequency Range	45-55Hz a 50Hz / 56-66Hz a 60Hz (auto sensing)				
	Power Factor	≥0.99				
	Current THDi	≤2%(100% non linear load)				
	Bypass Voltage Range	Max Voltage.: 220Vac:+25% (optional +5%,+10%,+15%) 230Vac:+20% (optional +10%,+15%) 240Vac:+15% (optional +10%) Min. Voltage.: -45% (optional -20%、 -30%) Frequency protection range: ±10%				
	Generator Input	Supported				
Output	Phase	3 Phase 4 Wires and Ground				
	Rated Voltage	380/400/415Vac				
	Power Factor	1.0				
	Voltage Regulation	±1%				
	Frequency	Utility Mode	±1%、±2%、±4%、±5%、±10% of the rated frequency (optional)			
		Battery Mode	(50/60±0.1%)Hz			
	Crest Factor	3:1				
	THD	≤1% with linear load ≤3% with non linear load				
Efficiency (in normal mode)		≥94%				
Battery	Voltage	Standard UPS: ±120Vdc (10+10) 12V 7/9AH Long run backup UPS ±96V/±108V/±120Vdc (16/18/20 pz. optional)				Standard UPS: ±240Vdc (20+20) 12V 7/9AH Long run backup UPS: ±192/±204/±216/±228/±240Vdc (32/34/36/38/40 pz optional)
	Charge Current (A)	Charge current is automatically set in according to the capacity and the quantity of the batteries Standard UPS (20pcs): 1,35A Standard UPS (2X20pcs): 2,7A Standard UPS (3X20pcs): 4,5A Long run backup UPS: max 10A				
	Battery Test	Supported				
Transfer Time		Utility to Battery: 0ms Utility to bypass: 0ms				

MODEL			POLARIS 10	POLARIS 15	POLARIS 20	POLARIS 30	POLARIS 40
Protection	Overload	AC Mode	Load ≤ 110%: last 60min, ≤ 125%: last 10min, ≤ 150%: last 1min, ≥ 150% change to bypass immediately				
		Battery Mode	Load ≤ 110%: last 10min, ≤ 125%: last 1min, ≤ 150%: last 10s, ≥ 150% shut down UPS immediately				
		Bypass Mode	Breaker 20A	Breaker 32A	Breaker 40A	Breaker 63A	Breaker 80A
	Short Circuit		Involves the whole UPS				
	Overheat		Line Mode: Switch to Bypass, Backup Mode: Shut down UPS immediately				
	Battery Low		Alarm and switch off UPS				
	Self-diagnostics		Upon Power On and Software Control				
	EPO (optional)		Shut down UPS immediately				
	Battery		Advanced Battery Management				
	Noise Suppression		Complies with EN62040-2				
Alarms	Audible & Visual		Line Failure, Battery Low, Overload, System Fault				
Display	Status LED & LCD		Line Mode, Bypass Mode, Battery Low, Battery Bad, Overload & UPS Fault				
	Reading on the LCD		Input Voltage, Input Frequency, Output Voltage, Output Frequency, Load Percentage, Battery Voltage & Inner Temperature etc.				
Communication Interface			USB, RS485, Parallel (optional), Coupler dry contact, Intelligent slot, SNMP card (optional), Relay card (optional)				
Environment	Operating Temperature		0°C~40°C				
	Storage Temperature		-25°C~55°C				
	Humidity		0~95% non condensing				
	Altitude		< 1500m When >1500m lower the rated power for use				
	Noise		< 55dB				< 58dB
Other	Dimensions (D×W×H)		828x250x868				
	Weight (Kg) (without batteries)		42	45	45	71	73
	N° of unit		1				
Safety Conformance			IEC/EN 62040-1, IEC/EN 62040-2, IEC/EN 62040-3, EN60950-1, IEC/EN 50171				
Frequency Converter function			Yes				



Naicon srl Via il Caravaggio, 25 Trecella
I-20060 Pozzuolo Martesana - Milano (Italy)
Tel. +39 02 95.003.1 Fax +39 02 95.003.313
www.naicon.com e-mail: naicon@naicon.com