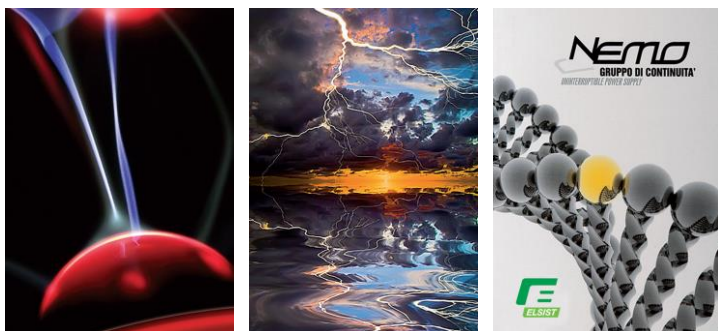


Flexible 3000

On Line Double conversion Rack-Tower Single Phase UPS



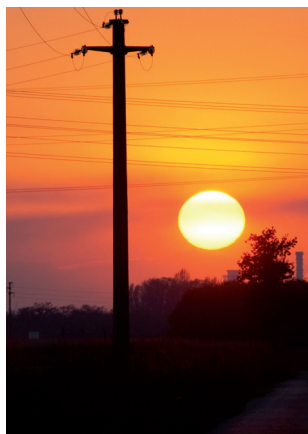
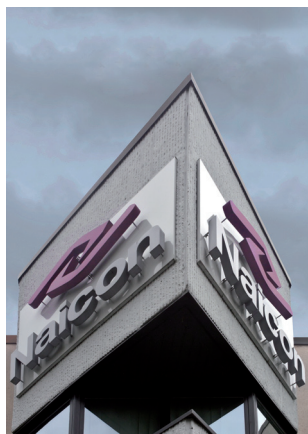
Electrical System for Continuity

MODEL		FLEXIBLE 3KVA	
RATED CAPACITY		3000VA/2700W	
INPUT	Input	Single phase and earthing	
	Voltage range	160-290VAC @ full load	
	Frequency	46Hz-54Hz±0.5Hz@50HZ or 56Hz-64Hz±0.5Hz@60HZ	
	Power factor	≥0.98	
	Current harmonic	< 7% (100% linear load)	
	Connection	1x Terminal P/N + Ground	
OUTPUT	Output style	Single phase and earthing	
	Rated voltage	208/220/230/240VAC	
	Power factor	0.9	
	Voltage precision	±2%	
	Frequency	Line mode	1. When input frequency is in the range, the output frequency is the same as that of input. 2. When input frequency is out of the range, the output frequency of output is (50/60±0.2)Hz
		Battery mode	(50/60 ± 0.2)Hz
	Crest ratio		3:1
	Transfer time		mains←→battery =0ms
			mains←→bypass <4ms
	Overload capacity	Battery mode	108%±5%<load≤150%±5% > 30s cut off output and warn 150%±5%<load<200%±5% > 300ms cut off output and warn
		Line mode	108%±5%<load≤150%±5% > 30s transfer to bypass and warn 150%±5%<load<200%±5% > 300ms transfer to bypass and warn
	Efficiency	mains	Full load ≥ 90%
		battery	Full load ≥ 85%
		ECO	Full load ≥ 94%
	Connection		1x Terminal P/N + Ground
BATTERY	Input battery voltage	72VDC	
	Internal battery quantity	6	
	Internal battery type	12V/9Ah sealed lead acid maintenance free battery (only refers to standard UPS)	
	Backup time	Full load≥5min (only refers to standard UPS), As for long backup UPS, the backup time is determined by the capacity of battery.	
	Charge current (A)	1	

NOTE: The rated output voltage has been already provided. The function of setting the rated output voltage by LCD menu is an optional.

MODEL	FLEXIBLE 3KVA
Temperature	0°C~40°C
Relative humidity	0~95% non-condensing
Altitude	<1500m when >1500m, lower the rated power for use
Store temperature	-25°C~55°C (without batteries)

MODEL	Dimension W*D*H (mm)	Net weight / Gross weight (Kg)
FLEXIBLE 3KVA	440*520*131	26/28.8



Naicon srl Via il Caravaggio, 25 Trecella
I-20060 Pozzuolo Martesana - Milano (Italy)
Tel. +39 02 95.003.1 Fax +39 02 95.003.313
www.naicon.com e-mail: naicon@naicon.com