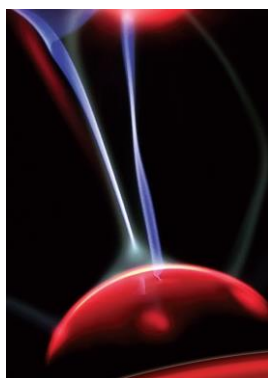


# Flexible 6K-10K

On-line Single Phase UPS rack/tower

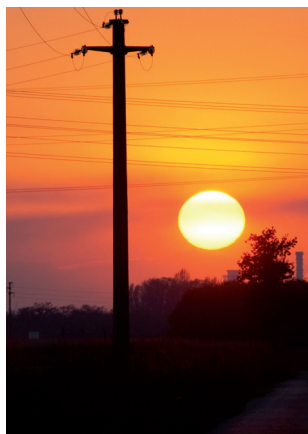
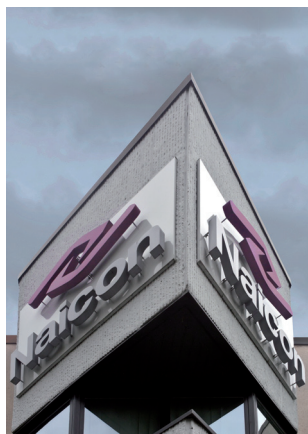


Uninterruptible Power Systems

MODEL		FLEXIBLE 6000	FLEXIBLE 10000
Phase		Single phase with ground	
Capacity (VA/Watts)		6000VA / 5400W	10000VA / 9000W
INPUT			
Nominal Voltage		208/220/230/240VAC	
Operating voltage range	Low line transfer	187Vac±5% @ 100%-80%load 160Vac±5% @ 80%-70%load 140Vac±5% @ 70%-60%load 120Vac±5% @ 60%-50%load 110Vac±5% @ 50%-0%load (Ambient Temp. <35°C)	
	High line transfer	300Vac ±5%	
	High line comeback	290Vac ±5%	
Operating frequency range		50-60Hz	
Power factor		≥0.99@100% load (Nominal Input Voltage)	
OUTPUT			
Output voltage		208/220/230/240Vac	
Power factor		0,9	
Voltage regulation		±1%	
Frequency	Line Mode (synchronized range)	50-60Hz	
	Battery Mode	(50/60±0.1)Hz	
Crest factor		3:1	
Harmonic distortion (THDv)		≤2% THD with linear load ≤5% THD with non linear load	
Waveform		Pure Sinewave	
Transfer time	AC mode <-> Batt. Mode	Zero	
	Inverter <-> bypass	4ms (Typical)	
Efficiency		>94% (AC mode) >89% (DC mode)	>94.5% (AC mode) >89% (DC mode)
BATTERY			
Battery Type		7Ah (external battery cabinet)	9Ah (external battery cabinet)
Numbers		16 (standard)	
Backup time		depends on the capacity of external batteries	
Typical recharge time (standard model)		4 hours recover to 90% capacity (Typical)	
Charging voltage		219.2 VDC ±1%	
Charge current		12A max, can be setting by LCD	
SYSTEM FEATURES			
Line Mode / Battery Mode		<b>Ambient Temp.&lt;35°C</b> <ul style="list-style-type: none"><li>105%~110%: UPS shuts down after 60 minutes at battery mode or transfer to bypass when the utility is normal</li><li>110%~130%: UPS shuts down after 5 minutes at battery mode or transfer to bypass when the utility is normal</li><li>&gt;130%:UPS shuts down after 3 seconds at battery mode or transfer to bypass when the utility is normal</li></ul> <b>35°C&lt;Ambient Temp.&lt;40°C</b> <ul style="list-style-type: none"><li>105%~110%: UPS shuts down after 1 minutes at battery mode or transfer to bypass when the utility is normal</li><li>&gt;110%:UPS shuts down after 3 seconds at battery mode or transfer to bypass when the utility is normal</li></ul>	
Short Circuit		Hold Whole System	
Overheat		Line Mode: Switch to Bypass; Backup Mode: Shut down UPS immediately	
Low battery voltage		Alarm and Switch off	

EPO (optional)	Shut down UPS immediately
Audible & Visual alarms	Line Failure, Battery Low, Overload, System Fault
Communication interface	USB / RS232, SNMPcard (optional), Relay card (optional)
<b>ENVIRONMENTAL</b>	
Operating temperature	0°C~40°C
Storage temperature	-25°C~55°C
Humidity range	20-90 % RH @ 0- 40°C (non-condensing)
Altitude	< 1500m
Noise level	Less than 50dBA at 1 Meter
<b>PHYSICAL</b>	
Dimension W×H×D (mm)	440*132*450 (3U)
Net Weight (kg)	15
<b>STANDARDS</b>	
Safety	IEC/EN62040-1,IEC/EN60950-1
EMC	IEC/EN62040-2,IEC61000-4-2,IEC61000-4-3,IEC61000-4-4, IEC61000-4-5,IEC61000-4-6,IEC61000-4-8

<b>BATTERY PACK</b>	
N°of Batteries	16pcs max (7/9Ah)
Dimension W×H×D (mm)	440*132*520 (3U)
Net Weight (kg)	50
Remarks	Hotswappable



Naicon srl Via il Caravaggio, 25 Trecella  
I-20060 Pozzuolo Martesana - Milano (Italy)  
Tel. +39 02 95.003.1 Fax +39 02 95.003.313  
[www.naicon.com](http://www.naicon.com) e-mail: [naicon@naicon.com](mailto:naicon@naicon.com)