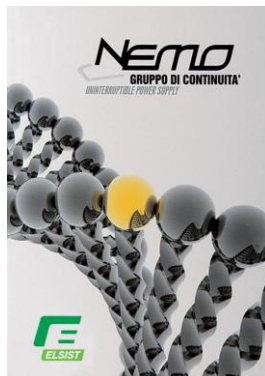
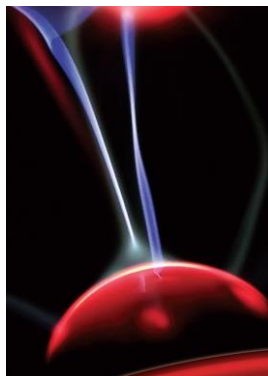


Mission 6K-10K

Single Phase UPS



Electrical System for Continuity

MODEL		MISSION 6KVA	MISSION 10KVA
Capacity		6KVA / 5.4KW	10KVA / 9KW
AC INPUT	Input	Single phase & Ground	
	Power factor	≥ 0.8 (input THDV $\leq 1\%$)	
	Rated voltage	220VAC / 230VAC / 240VAC	
	Rated frequency	50Hz/60Hz Automatically selected	
	Voltage range	120~276Vac	
	Frequency range	45~65Hz	
	Bypass voltage range	220Vac max: default +25% (+10%, +15%, 20%, 25%) 230Vac max: default +20% (+10%, +15%, 20%) 240Vac max: default +15% (+10%, +15%)	
		min: default -45% (-20%, -30%, -45%,)	
	Bypass frequency range	$\pm 1\%$ 、 $\pm 2\%$ 、 $\pm 4\%$ 、 $\pm 5\%$ 、 $\pm 10\%$	
	THDI	$\leq 3\%$ (100% liner load, input THDV $\leq 1\%$)	
		$\leq 5\%$ (100% non liner load, input THDV $\leq 1\%$)	
	Connection	Terminal block	
BATTERY	Battery number	16 standard - 18/20 optional	
	Battery type	12V/7Ah	12V/9Ah
		sealed lead acid maintenance free battery	
	Charge model	Boost charge or float charge auto switch	
	Charge time	Boost charge up to 20Hr (Max)	
	Charge current (Max)	1A (Standard)	
AC OUTPUT	Output type	Single phase & Ground	
	Voltage regulation	$\pm 1.0\%$	
	Voltage distortion(THD)	less than 2% at 100% liner load	
		less than 5% at 100% non-liner load	
	Rated voltage	220V/230V/ 240Vac can be setted	
	Power factor	0.9	
	Frequency regulation	$\pm 0.1\%$ (stand alone)	
		$\pm 0.25\%$ (parallel operation)	
	Frequency	Utility mode: tracking mains frequency	
		Battery mode: 50Hz/60Hz	
	Frequency track speed	1Hz/s (stand alone)	
		0.5Hz/s (parallel operation)	
	Load capacity (Mains, drop a level in battery mode)	105 % ~ 110 %, lasts 1 hour	
		110%~125%,lasts 10 minutes	
		125%~150%, lasts 1 minute	
		> 150%, switch to bypass immediately	
	Overload for bypass	>95%, can not inverter-fed	
		Load for a long time when rated output current under 125%	
		Bypass load capacity is controlled by bypass circuit breaker, tripping when circuit breaker operating current.	
	Crest factor	3:1	
	Efficiency	Line Mode	Full Load $\geq 90\%$
		Battery Mode	Full Load $\geq 88\%$
		ECO	Full Load $\geq 96\%$
	Dynamic respond	$\pm 5.0\%$ (100% balance load)	
		$\leq 5\%$ in a cycle	
	Inverter output current limit	When current instantaneous value is 2 ~ 3 times of rated current peaks (1.414 * rated power/(3 * 220)), the inverter will be conducted in each pulse current limit protection.	

Switch time	DC component	≤200mV
	Connection	Terminal block
	Between Normal and battery mode	0ms
	Between inverter and bypass	0ms
	Noise	<55dB (1m)
	Display	LED+LCD
	Safety	Meeting IEC62040-1, GB4943
	EMI	Conduction : IEC 62040-2
		Radiation : IEC 62040-2
		Harmonics : IEC 62040-2
	EMS	IEC 62040-2
	Isolation resistance	> 2MΩ (500Vdc)
	Isolation intension	2820Vdc, <3.5mA, 1min
	Surge	Meeting IEC60664-1 1.2/50uS+8/20uS 6kV/3kA.
	Protection	IP20

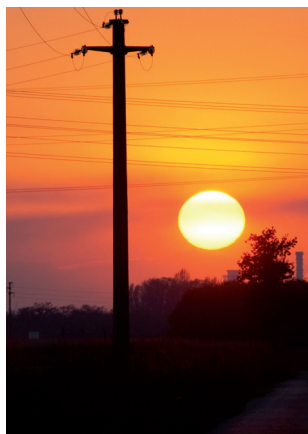
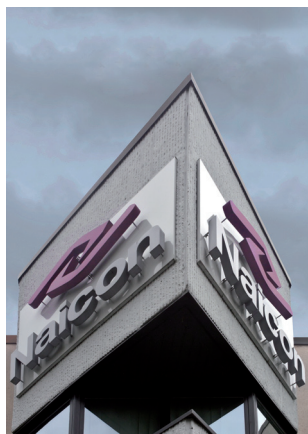
◆ Work Environment

TYPE	MISSION 6KVA	MISSION 10KVA
Temperature	0°C~40°C	
Relative humidity	0~95% non-condensing	
Altitude	<1500m when>1500m, lower the rated power for use	

◆ Mechanical Specification

TYPE	MISSION 6KVA	MISSION 10KVA
Height (mm)	616	
Width (mm)	250	
Depth (mm)	502	
Net weight (Kg)	62	64
Color	Black	

Note: 16 pcs. 7-9Ah Battery can be installed inside of standard UPS. External battery Cabinet or Rack must be used for higher quantity and capacity of batteries.



Naicon srl Via il Caravaggio, 25 Trecella
I-20060 Pozzuolo Martesana - Milano (Italy)
Tel. +39 02 95.003.1 Fax +39 02 95.003.313
www.naicon.com e-mail: naicon@naicon.com