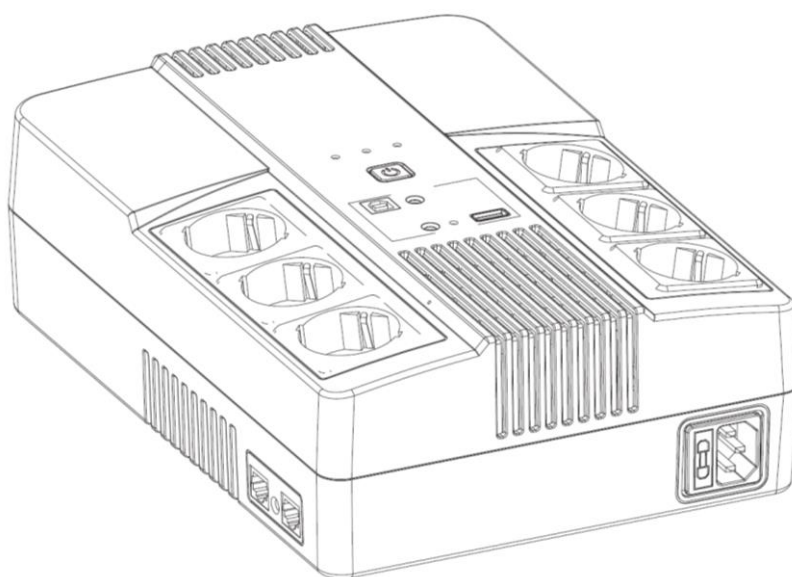
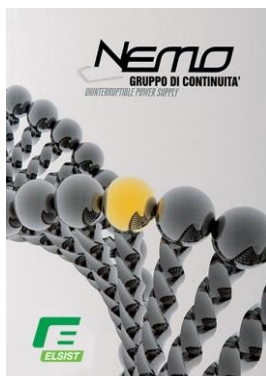


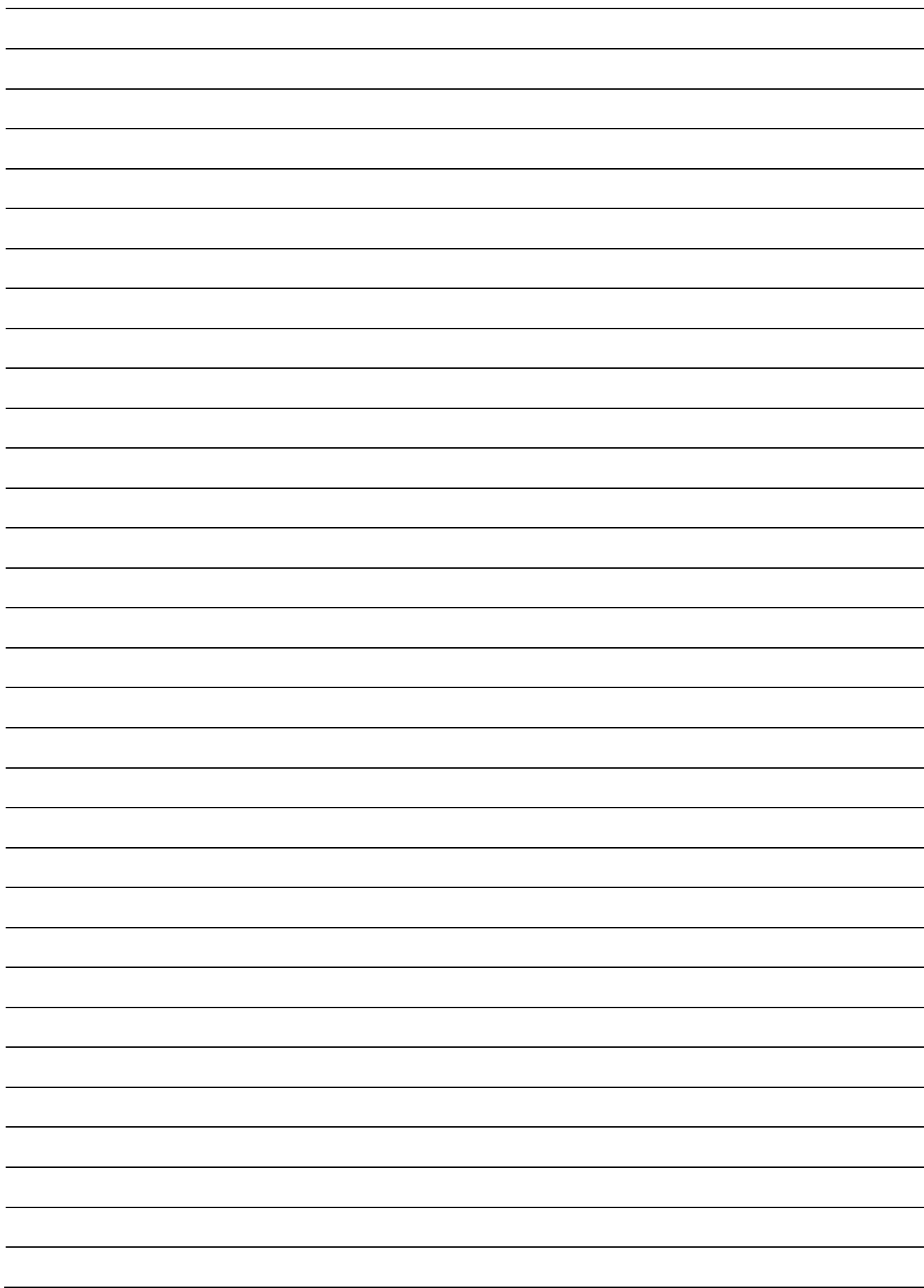
Multistation 1000

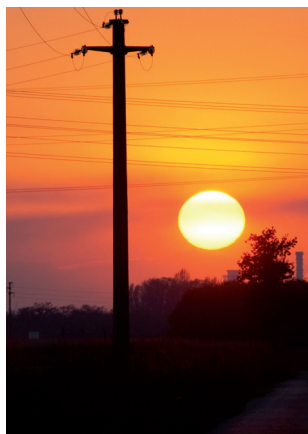
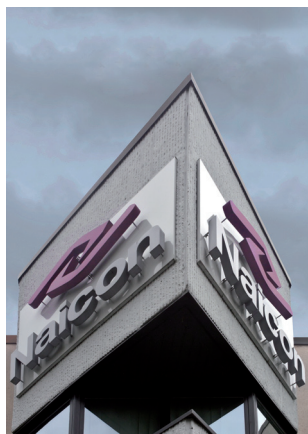
Single-phase Line interactive UPS



Uninterruptible Power Systems

MODEL		MULTISTATION 1000
NOMINAL POWER		1000VA / 600W
INPUT	Input	Single-phase with GND connection
	Voltage	220Vac / 230Vac / 240Vac
	Voltage range	161 – 290 Vac
	Connections	1 x IEC
OUTPUT	Output	Single-phase with GND connection
	Voltage Tolerance (Battery Mode)	±10%
	Frequency	50Hz
	Frequency Tolerance (Battery Mode)	±1Hz
	Waveform	Modified sinusoidal
	Connections	3x Schuko outlets (with input filtering and UPS protected) 3x Schuko outlets (with input filtering and By-pass)
BATTERY	Battery Voltage	12VDC
	Quantity of battery	1
	Type	12V/9AH battery sealed lead-acid, maintenance-free
	Recharge time	6-8 hours at 90% after deep discharge
VISUAL INDICATORS	AC Mode	Green LED On
	Battery Mode	Yellow LED flashing
	Failure	Red LED On
ACOUSTIC ALARMS	Backup Mode	A Beep every 10s
	Low Battery	A Beep every 1s
	Overload	A Beep every 0.5s
	Failure	Continuous beep
USB CHARGER	Typical	5.0V / 1.0A Max
SWITCHING TIME	Typical	2-6 ms
PROTECTIONS	Complete	Against discharge, overcharging, overload + input fuse
AMBIENT	Operating Temperature	0°C – 40°C
	Noise	< 40dB
MECHANICAL	Dimensions WxDxH	202 x 290 x 91 mm
	Weight	5,4 Kg
STANDARDS	IEC/EN 62040-1, IEC/EN 62040-2, IEC/EN 62040-3, IEC/EN 60950-1	





Naicon srl Via il Caravaggio, 25 Trecella
I-20060 Pozzuolo Martesana - Milano (Italy)
Tel. +39 02 95.003.1 Fax +39 02 95.003.313
www.naicon.com e-mail: naicon@naicon.com